

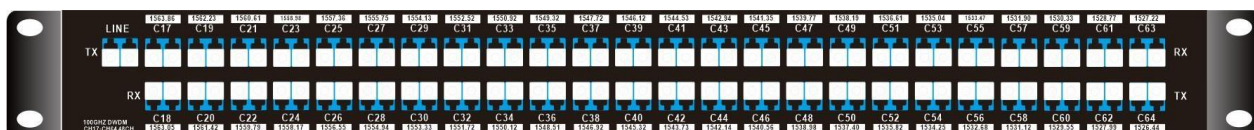


D48CH C17-C64 DWDM MUX/DEMUX, LC/UPC, 1U Rack

The 48ch DWDM MUX DEMUX is designed by NewNets, wavelength from C17 to C64(1563.86nm~1526.44nm), in accordance with the ITU-T G.694.1 100GHZ grid, it maximizes the capacity of the C-band range.

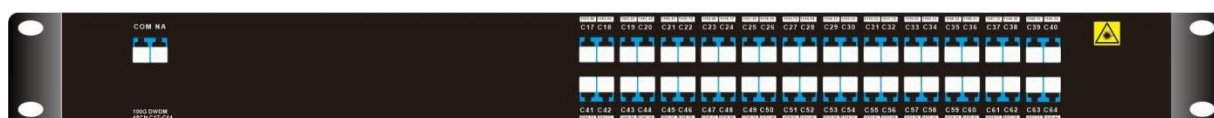
The 48ch DWDM is totally passive DWDM device, and support low insertion loss < 3.5dB). And it conjunct with The DWDM amplifiers and DCM device, the 48ch DWDM transfer system can support a long distance transmission.

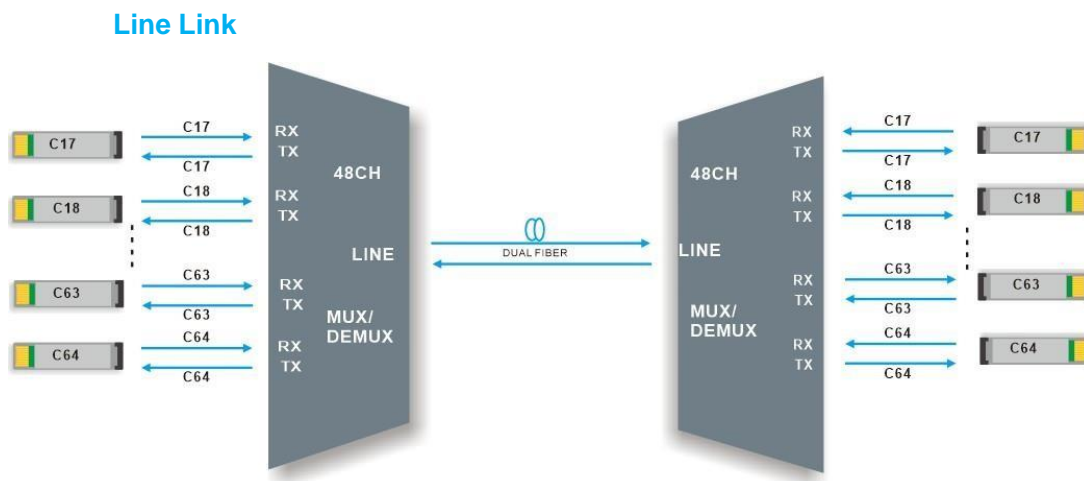
Product Panel- Dual Fiber



48CH DWDM MUX DEMUX

Product Panel- Single Fiber





48CH DWDM MUX DEMUX Dual fiber transmission

48 Channels DWDM MUX DEMUX , supports 48 channels difference business in two optical fiber for point-to-point transmission.

It works in Broadcast and TV, IDC, finance, government, cloud, massive data and other industries.

Product Specification

Wavelength	48 channels C17-C64	Channel Spacing	100GHz (0.8nm)
Channel Passband	±0.11nm	Technology	AAWG (Gaussian)
Insertion Loss	≤ 3.5dB	Link Loss	≤7.0dB
Center Wavelength Accuracy	±0.05nm	Return Loss	≥ 40dB
Directivity	≥ 40dB	Polarization Mode Dispersion	≤ 0.1ps
Polarization Dependent Loss	≤ 0.3dB	Channel Isolation	Adjacent ≥ 25dB Non-adjacent ≥ 30dB